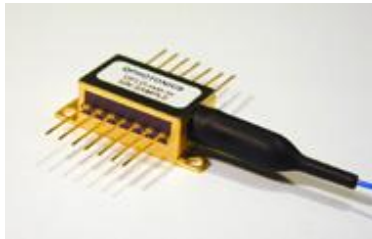


Multimode fiber coupled laser diode, 300mW @ 450nm, QFLD-455-300M



- Multi-mode Fabry Perot (FP) laser.
- CW or pulsed operation, 5ns rise time.
- Operating temperature range 0 °C to +50°C.
- Wavelength/temperature coefficient 0.1nm/°C.
- Built-in thermo-electric cooler and thermistor.
- Multimode fiber pigtail 105um/125um, 70cm-1m long typical.
- Optional FC/PC or FC/APC connectors.

 [View Sample Datasheet PDF](#)

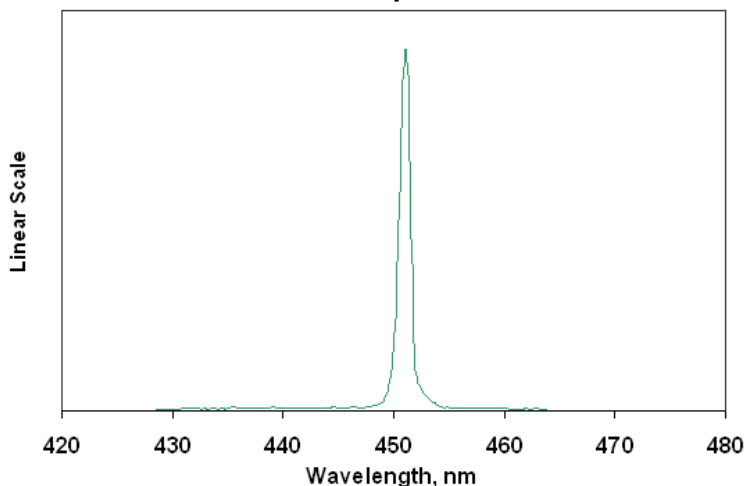
Specifications

Test conditions: temperature 25°C, CW operation

Parameter	Symbol	Min	Typ	Max	Unit
Optical power from pigtail	P_f		300		mW
Wavelength	λ_c	435	450	460	nm
Forward current	I_f		630	900	mA
Threshold current	I_{th}		150		mA
Forward voltage	V_f		4.1	6	V
Rise time in pulse mode	t_r		0.5		ns
TEC current	I_{TEC}			3	A
Thermistor resistance @ 25°C		9.5	10	10.5	KOhm
Lead soldering temperature @ 10s	-			260	°C
Storage temperature	T_{stg}	-40		70	°C
Operating case temperature	T_c	0		60	°C

Spectrum

Emission Spectrum



Pin Configuration

Photodiode is not available for this model.

